

Innovation Fund

9th September 2024

Chris Lee – Interim Head of School Inclusion

bcpcouncil.gov.uk



Agenda



- ✓Recap – Our Initial Proposals
- ✓You Said... Feedback from Head Teachers
- ✓We Will Do...
- ✓Timeline

Recap - Our Initial Proposals



You Said... Education Conference

27.06.24



Change name –development fund?

Changes to mainstream buildings not built for additional needs

Outreach

- ✓ Outreach from Katie Tuck and her team has been golden
- ✓ Need In and outreach
- ✓ Hubs/cross pollination/sharing information
- ✓ Training – look at EHCP content and use to support
- ✓ Videos could help to upskill teachers
- ✓ BOOST funding needs to stay
- ✓ Trauma informed – schools are moving to this – consider timing of training e.g. twilights to enable all staff to attend

Specialist teachers

- ✓ Specialist teachers can help ensure school set up right way e.g. for those awaiting specialist.
- ✓ Report recommendations need to be able to be delivered in mainstream

You Said... Education Conference

27.06.24

Area SENCOs

- ✓ concern over school losing capacity if seconded
- ✓ IQM – there is a national mark – what is the difference and why use a new local one?
- ✓ Build on work that Trusts already do
- ✓ Ensure consistency of offer across whole area

Support school's own provision through the funding

- ✓ Funding for groups rather than individuals
- ✓ Primary/EY – target to enable early identification and support
- ✓ Planning for transition
- ✓ Primaries are looking for ways in which individualised curriculums can be delivered within mainstream provisions to promote inclusion.
- ✓ Mainstream Plus – a way of allowing children with complex needs to stay in mainstream by hiring specialist staff to support them. Required ongoing evidence that the child was flourishing and cost £10k per child



You Said....

Hamworthy HT Forum 03.07.24



- ✓ Area SENCO – would know us and patches; is doing/has recently done the job
- ✓ Retention in the posts – less churn, more consistency
- ✓ SENCO CPD
- ✓ Transition
- ✓ Can we have test and learn projects funded? E.g.
 - ✓ shared units in core and foundation subjects Y5-Y8?
 - ✓ Better transitions, sense of welcoming in new school, work travels with the children to their next school/setting
 - ✓ New pathways 14-19 across partner schools and B&P College including EHE and risk of NEETS
 - ✓ Funding for partner schools to support CLC and YP who are EHE and/or risk of NEET as an examination centre.

We Will Do...

Areas for Funding

- ✓ Inclusion Consultants
- ✓ Training and Development Funding
- ✓ Additional Outreach Supplement
- ✓ Innovation Projects



Inclusion Consultants (ICONS)



- ✓ Phase and Location based model building on existing resource
- ✓ 2 x additional EY ICONs supporting EY settings and schools to and including Reception year and KS1.
- ✓ 5 x Primary age ICONs supporting primary schools in KS2
- ✓ 4 x Secondary age ICONs supporting secondary schools
- ✓ 2 x Senior ICON to manage school age team

ICONS– levels of support

Universal	Foundation	Enhanced	Statutory
<ul style="list-style-type: none">✓ A named ICON allocated as a point of contact for general queries and advice✓ ICON attendance at an annual planning meeting✓ Support within the first two days following a critical incident✓ Access to Inclusive Setting Audit (ISA) and Environmental SEND Audit (ESA)✓ Access to Graduated Response and Ordinarily Available Provision information and resources	<ul style="list-style-type: none">✓ Information, advice and guidance via telephone✓ Annual 'Whole School SEND Audit' including SEND in a Nutshell✓ ICON attendance at termly planning meetings✓ Agreed number of individual assessments and observations per year per school	<ul style="list-style-type: none">✓ SEND Health Check✓ Post-Ofsted inspection support for any improvement points✓ Dedicated time for whole school development, e.g. strategic work with SENCO/HT regarding SEND systems	<ul style="list-style-type: none">✓ EHC Assessments✓ Annual Reviews✓ No to Assessment decisions✓ No to EHC Plan decisions

ICONS- Costing

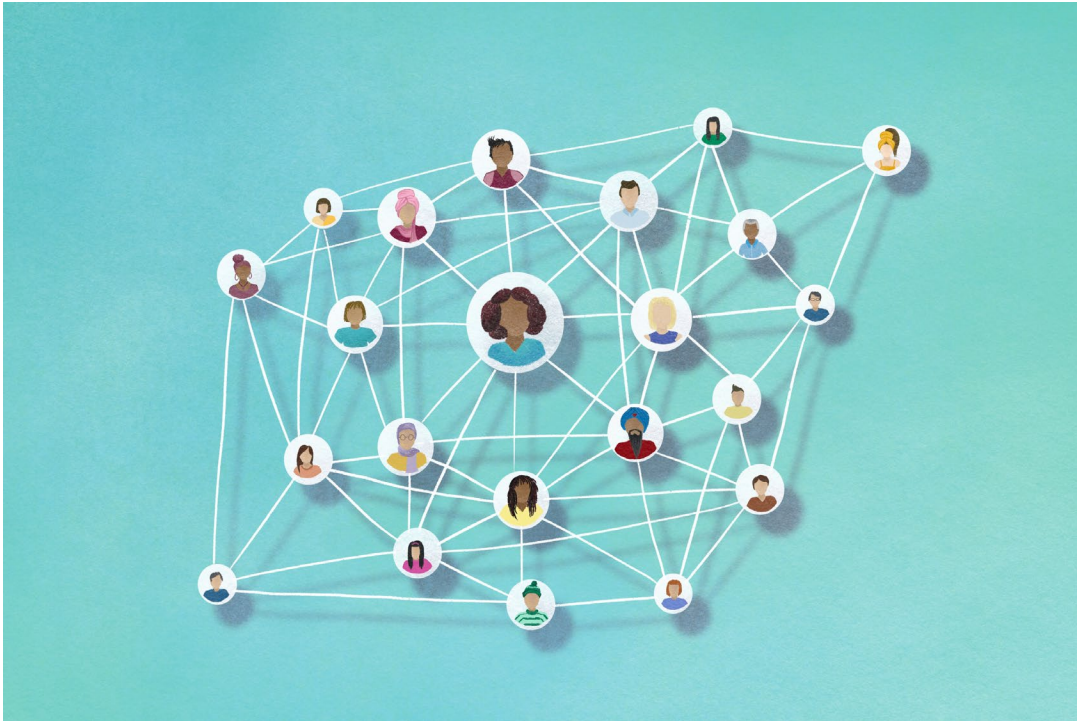
- ✓ 2 x EY ICONs & 5 x Primary ICONs & 4 x Secondary ICONs
- ✓ Soulbury SCP 8-12 £49,878 - £55,484 plus 32% oncosts
- ✓ 11 posts = cost range of £724,228 - £805,627

- ✓ Plus 2 x Senior ICON
- ✓ Soulbury SCP 13 – 17 £56,976 - £63,748 plus 32% oncosts
- ✓ 2 posts = cost range of £150,416 – £168,294

- = Overall Cost Range of £874,644 - £973,921**



ICONS– Structural Position and recruitment



- ✓ Structure to be confirmed pending agreement
- ✓ Potential to be sited under SEND Strategic Head of Service
- ✓ Senior ICON to report directly to relevant Head of Service.
- ✓ Recruitment – based on school feedback – concerns relating to just secondment recruitment.
- ✓ Offer permanent Senior role, 9 permanent roles and 2 secondment roles to enable current practice and upskilling of our school staff but not be reliant on secondments to recruit.

Training and Development Funding

What is it? Whole School SEND

- ✓ 1. Every Leader a Leader of SEND Training
 - For Senior Leaders in schools to impact on leadership culture and practice to enable a cascade effect throughout schools.
- ✓ 2. Training in delivering Whole School SEND School Reviews for ICONs
 - Enabling ICONs to conduct SEND Reviews in schools to help improve SEND provision and strategy.
- ✓ 3. Free Online CPD and training on Whole School SEND Online for all schools

Proven impact on culture and approaches to SEND in mainstream schools on the leadership teams, working on hearts and minds of School Leaders on the basis that it cascades down throughout the school.

Cost

- ✓ 1. 3 sessions will be funded by Whole School SEND themselves for Autumn Term. Any further sessions will cost £500 per session 3 additional to deliver = £1,500
- ✓ 2. £1,200 per delegate x 11 = £13,200 plus expenses
- ✓ 3. No cost.

Desired impact - Change of culture in schools and increased confidence and ability to meet needs in mainstream – resulting in fewer exclusions, fewer suspensions, reduced EHCNA requests and/or increased numbers of EHCP remaining in mainstream settings



Training and Development Funding



What is it?

- ✓ Excluded to Included Training (F2F full day training) for schools.
- ✓ The programme helps schools reduce exclusions by developing an understanding of the factors that affect pupils' behaviours and relationships. Having this understanding of the motivation behind a pupils' actions is key in improving attendance and building positive relationships. It also equips school staff with effective support mechanisms for those navigating potential exclusion.
- ✓ The programme serves as a catalyst for positive change within schools. Ultimately, the programme plays a pivotal role in reshaping the narrative of school environments. With the aim of working towards inclusivity, empathy, and the overall well-being of all students.

Cost

- ✓ £2,000 +VAT + Trainer expenses

Desired Impact

- ✓ Change of culture and awareness in relation to exclusions and increasing belonging/inclusion behaviours by schools

Training and Development Funding

What is it?

- ✓ Attachment and Trauma (F2F full day training) for schools
- ✓ Provides schools with the training and tools they need to be attachment and trauma aware so they can create a positive learning environment. Led by experienced attachment and trauma specialists, the course includes practical strategies to help staff better understand and support vulnerable children impacted by trauma and unmet attachment needs.

Cost

- ✓ £1,200 + VAT + Trainer expenses

Desired Impact

- ✓ Can help improve attendance and reduce exclusions, while boosting academic engagement and enabling children to achieve their full potential. Teachers and other staff will be more confident in addressing and dealing with attachment and trauma-related issues in education, improving relationships across the school community.



Training and Development Funding

What is it?

- ✓ Supporting Transitions (webinar half day training) for schools. Looking at the big differences that make transition hard for some pupils, and giving schools the guidance and tools to make the experience feel safer and give the children the tools to be successful.

Cost

- ✓ £850 + VAT + Trainer expenses

Desired Impact

- ✓ Increasing the levels of success with transitions between settings for pupils, reducing exclusions, failed placements and attendance issues.



Training and Development Funding

What is it?

- ✓ Trauma Informed Schools UK – whole school training – 2 x 3 hour development sessions to be delivered as half-day INSET or twilight sessions to increase whole school awareness of trauma informed theory and practice and how to implement across the setting

Cost

- ✓ £1990 x 98 schools = £195,020 (to be negotiated)

Desired Impact

- ✓ Increased understanding of, confidence with and support in relation to Trauma across whole staff, improving inclusive practice, a culture of belonging and reducing exclusions, suspensions and poor attendance, resulting in more children thriving in mainstream placements



Training and Development Funding

What is it?

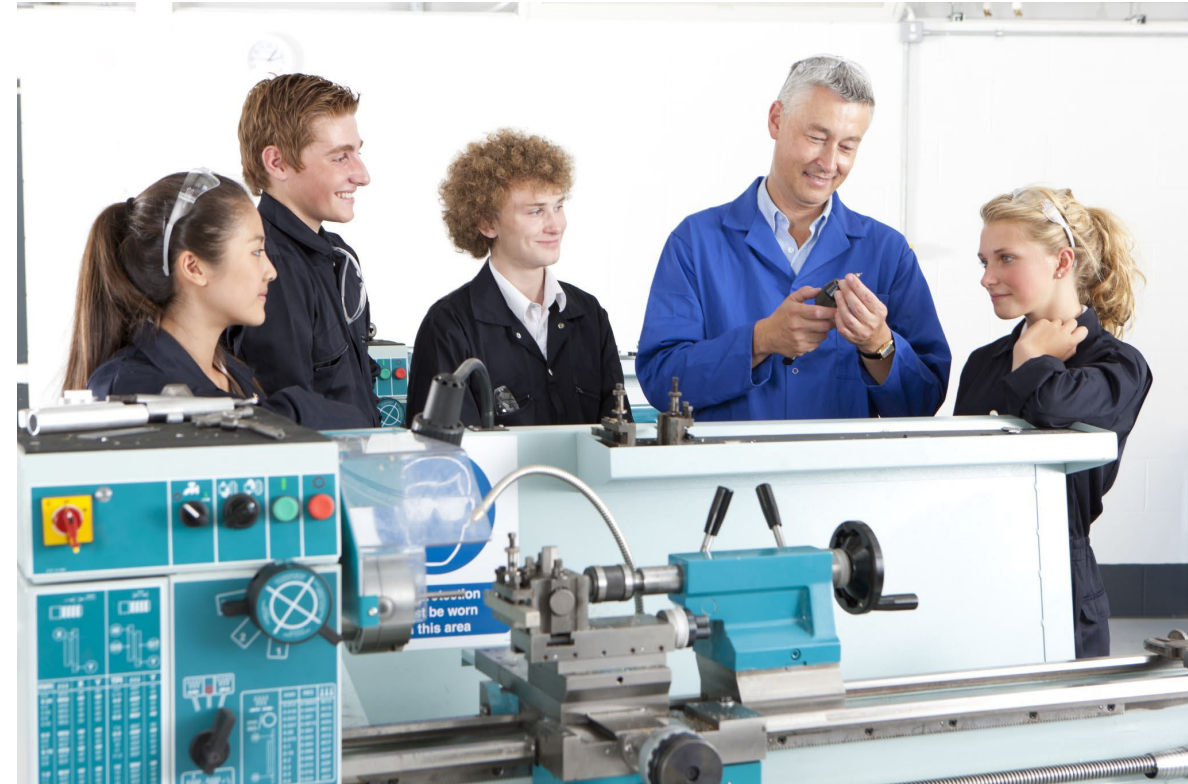
- ✓ Trauma Informed Schools UK – 2-day Leadership Course to increase senior leadership awareness of trauma informed theory and practice and how to implement system changes across the setting.

Cost

- ✓ £3,100 for 40 delegates x 5 cohorts = £15,500 + venue hire

Desired Impact

- ✓ Increased understanding of, confidence with and support in relation to Trauma across senior leadership in schools, resulting in a systemic and cascade change in school organisations, improving inclusive practice, a culture of belonging and reducing exclusions, suspensions and poor attendance, resulting in more children thriving in mainstream placements



Additional Outreach Supplement

What is it?

- ✓ Additional funding set aside through Innovation Fund to increase capacity of Outreach Support based on feedback at workshops and Education Conference to support further BOOST training. Exact format to be agreed following end of year outreach review and final planning in Autumn Half Term 1.

Cost

- ✓ Max £500,000 additional allocated.

Desired Impact

- ✓ Additional outreach support through BOOST funding to provide further layers of training and support for mainstream schools from outreach providers, increasing schools' ability to support pupils in mainstream reducing exclusions, suspensions etc



Innovation Projects

What is it?

- ✓ Funding allocated for mainstream schools to be able to submit bids/EOI as to how they can use to support cohorts of children within their settings in new ways where without this funding they would otherwise have struggled to meet their needs in mainstream.

Cost

- ✓ A total pot of £1,180,954.96 for bids to be made for resulting in a minimum of 11 projects based on £100,000 per bid. Larger bids for wider impact could be considered.

Desired Impact

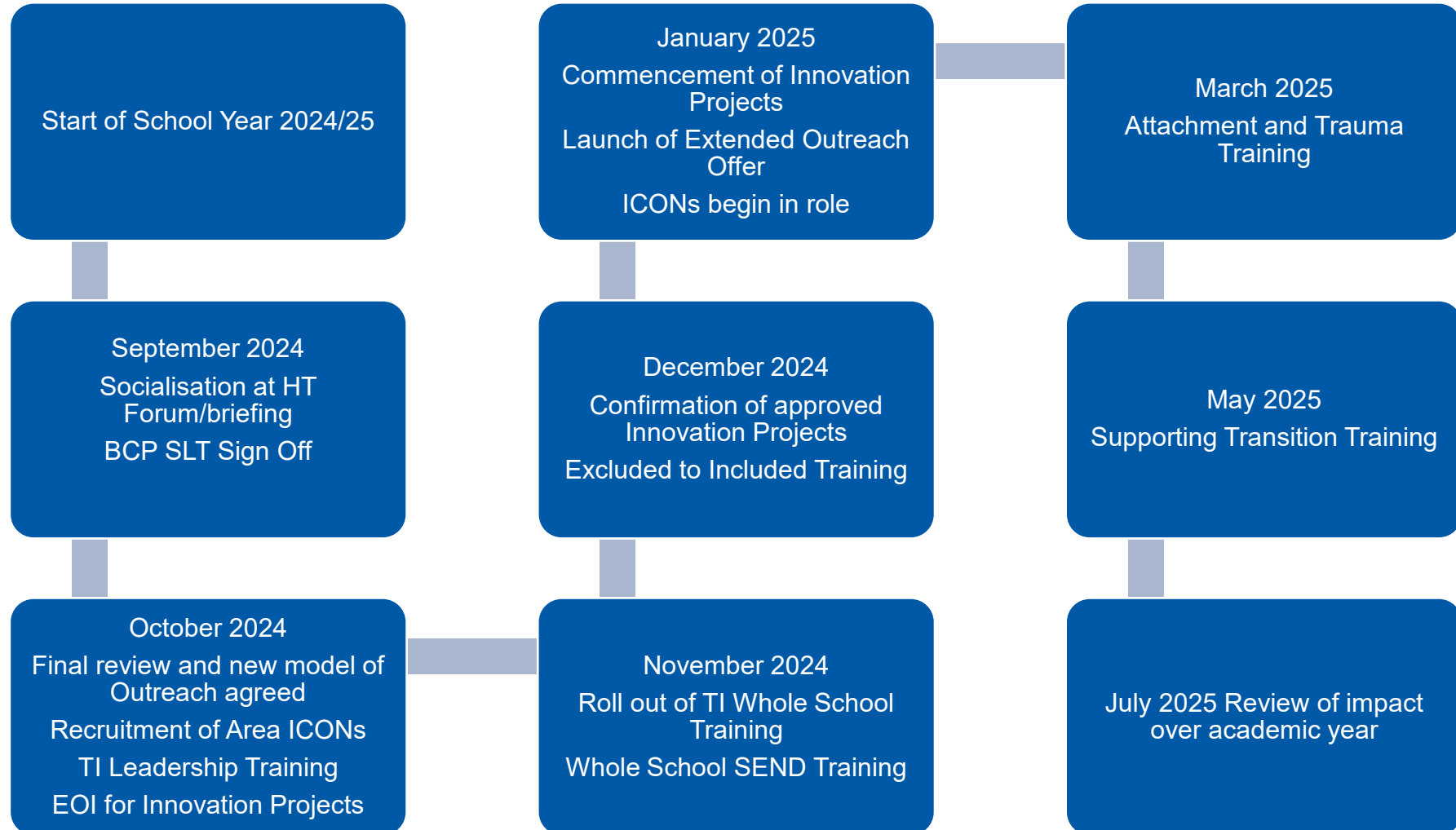
- ✓ Increased levels of inclusion in mainstream – reduction in numbers of children with EHCPs requiring specialist placements, reduction in exclusions and suspensions.



Costing Summary – Total £2.8 million

Element	Impact Sought	Costs
Inclusion Consultants	Increased Advice and Support to mainstream schools resulting in greater ability and confidence with increased numbers of pupils with SEND successfully remaining in mainstream	£874,644 - £973,921
Every Leader a Leader of SEND - Whole School SEND Training for schools	Change of culture in leadership of schools and increased confidence and ability to meet need in mainstream	£1,500
SEND Review Training – Whole School SEND for Inclusion Consultants	Upskilling of ICONs to enable them to deliver SEND reviews of School SEND systems and processes.	£1200 x 11 = £13,200 + Trainer expenses
Excluded to Included Training (F2F full day training) for schools	Change of culture and awareness in relation to exclusions and increasing belonging/inclusion behaviours by schools	£2,000 +VAT + Trainer expenses
Attachment and Trauma (F2F full day training) for schools	Increased awareness of attachment and trauma-based practice for SENCOs and DTs	£1,200 + VAT + Trainer expenses
Supporting Transitions (webinar half day training) for schools	Increased awareness of how to support children through transitions, improving their successes and reducing negative experiences.	£850 +VAT
Trauma Informed Schools UK – whole school training 2 x 3-hour sessions for schools	Increased awareness and improved practice across whole staff groups in all schools in relation to trauma informed practice	£1990 x 98 schools = £195,020
Trauma Informed Schools UK – 2-day Leadership Course for schools	Support senior leads in schools to implement trauma informed practices into their schools, resulting in reductions in suspensions and exclusions, the frequency of challenging behaviour and improved educational outcomes	£3,100 for 40 delegates x 5 cohorts = £15,500 + venue hire
Outreach supplement	Increase outreach offer and access to outreach training- supporting inclusive practice in staff	£500,000
Innovation Fund	Supporting mainstream schools to be innovative in their approaches to meeting pupil need, resulting in increased inclusion, reduced exclusions, suspensions, specialist placements.	~£1,100,000

Timeline 2024-25



Any Questions?

